



**LAB  
PRO**

  
**GELATEC**

## WE OVERCOME EVERY CHALLENGE!

We manufacture products beyond the limits of endurance and innovation, delivering maximum performance in extreme temperatures and demanding conditions.

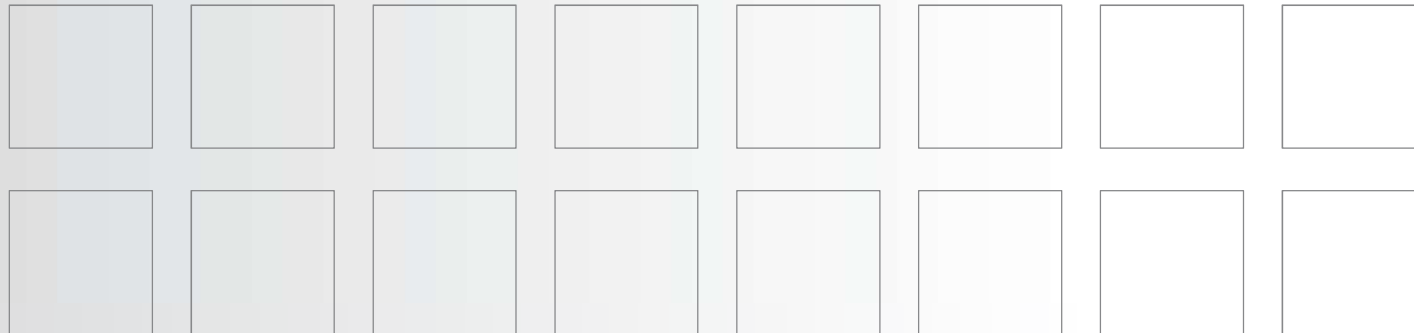
Strength and reliability are at the core of every creation, while our commitment to environmental protection is non-negotiable.

We invest in top performance without compromising sustainability, building a world where durability meets responsibility.

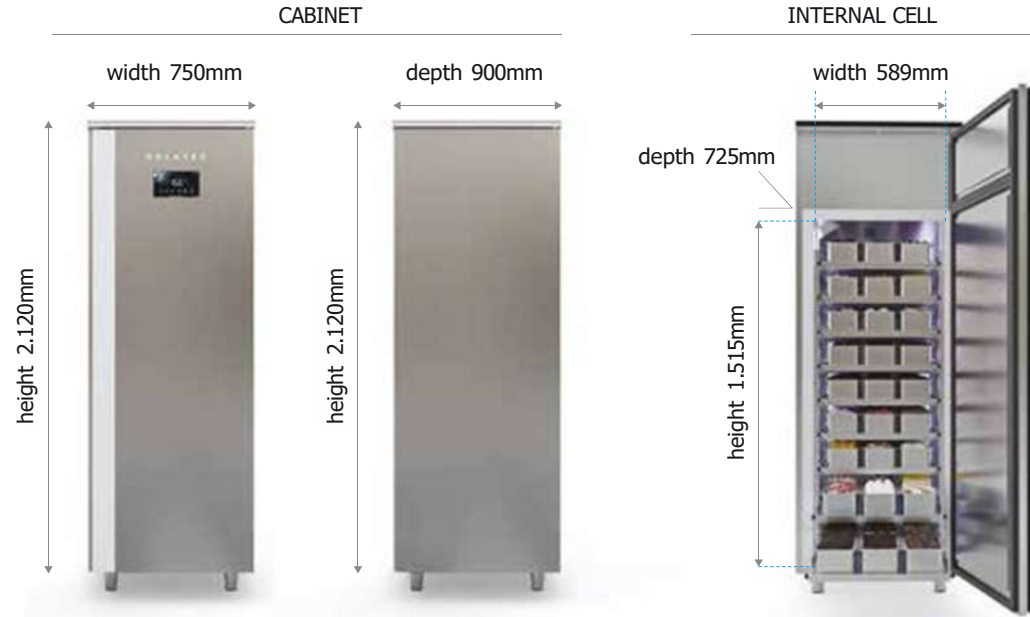
## SUPERIOR COOLING PERFORMANCE

Using state-of-the-art refrigeration technologies and powerful cooling efficiency systems, our chillers ensure uniform and consistent temperature maintenance, preserving your ice cream in perfect condition.

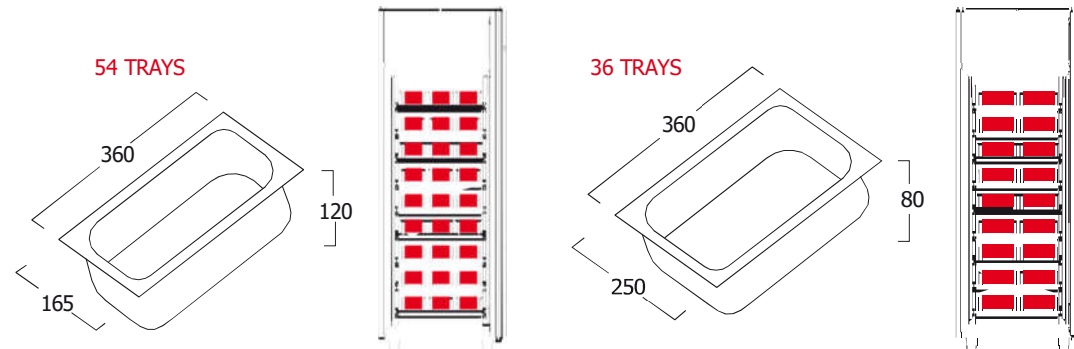
Strong cooling performance enables our refrigerators to respond quickly to changes in outdoor temperature and promptly restore to the optimal temperature after each opening, guaranteeing the utmost freshness and quality of the ice cream.



## DIMENSIONS



## TRAY CAPACITY



## TECHNICAL SPECIFICATIONS

Electric supply	220 - 240V   1Ph   50Hz		380 - 400V   3Ph   50Hz	
Performance		<b>R290</b>	<b>R452</b>	
Condensation type		AIR COOLED		AIR COOLED
Configuration		-5 +15	-10 -25	-5 +15 -10 -25
Power consumption	W	202	828	380 901
Current consumption	A	0.95	4.84	2.4 3.82
Main power cable	mm <sup>2</sup>	3G1.5	3G1.5	3G1.5 3G1.5
Refrigeration power (-20/+40°C Suction gas +20°C Subcooling 0 K)	W	530	617	560 588
Expansion		Capillary	Capillary	Capillary Capillary
air flow for ventilation	m /h	554	554	583 600
air flow for Condenser	m /h	405	394.2	405 378.6
Defrost Type		Hot Gas	Hot Gas	Hot Gas Hot Gas
Noise				32dBA
Gas	KG	0.115	0.15	0.37 0.45
polyrethane foam (42kg/m <sup>3</sup> )	mm	85	85	85 85
Climate class		class 5 =40°C		class 5 =40°C

## WEIGHT

<b>R290</b>	530W	180kg
	617W	190kg
<b>R452</b>	560W	180kg
	588W	190kg



## PERFORMANCE THAT EXCEEDS ALL PREDICTIONS

LabPro refrigerators combine unparalleled performance with superior energy efficiency.

Each unit is equipped with a peak cooling system that guarantees temperature uniformity across all compartments, assuring the quality and freshness of the ice cream.



## INNOVATION IN ENERGY EFFICIENCY

LabPro refrigerators integrate energy-saving technology that establishes new benchmarks within their class.

Using high-efficiency cooling systems, each unit is designed to minimize environmental impact without compromising performance.



## INNOVATIVE WI-FI CONTROL

LabPro refrigerators address the need for instant control and adaptability with built-in WiFi control functionality. Adjust temperature settings, monitor energy consumption, receive notifications for equipment maintenance at any time, safely and securely with our advanced mobile app.

This feature not only guarantees enhanced performance and longevity for your equipment but also provides smarter and more cost-effective resource management.



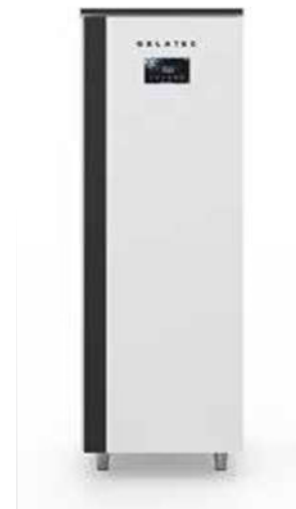
**AVAILABLE COLORS  
WITH BLACK GLASS**



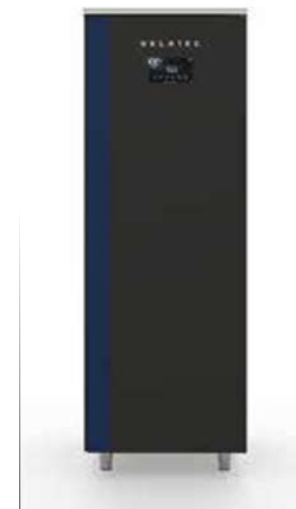
Scotch brite



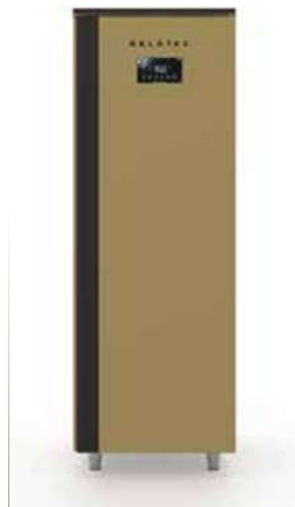
Mirror



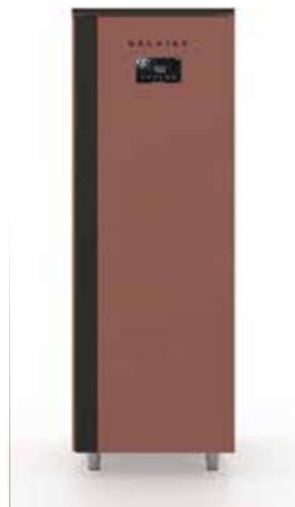
White



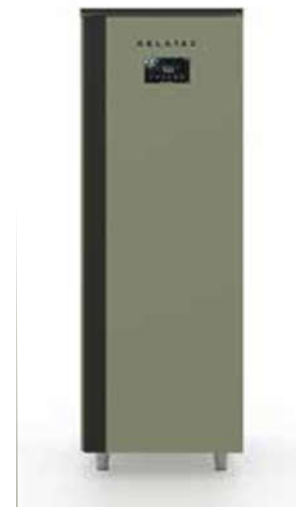
Black



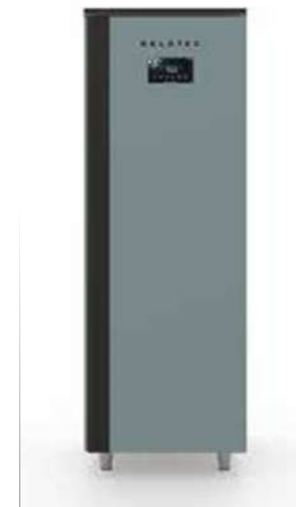
Gold



Cherry



Pistachio



Cloud

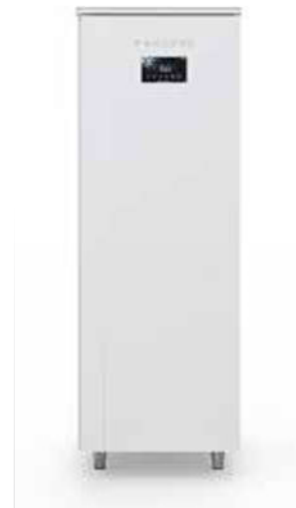
**AVAILABLE COLORS  
WITH WHITE GLASS**



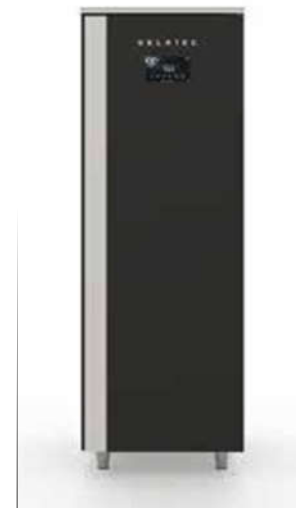
Scotch brite



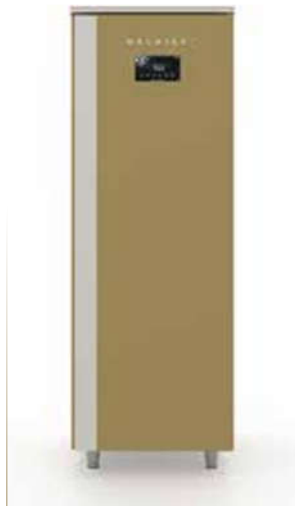
Mirror



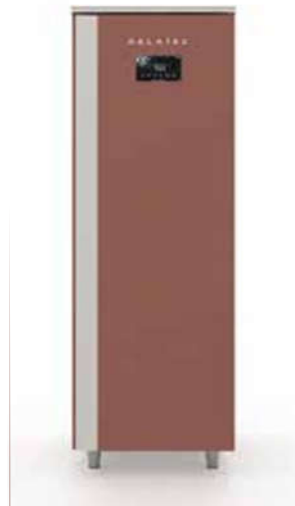
White



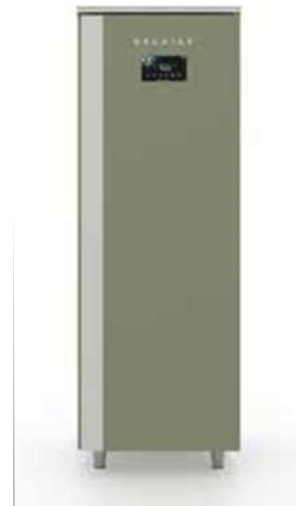
Black



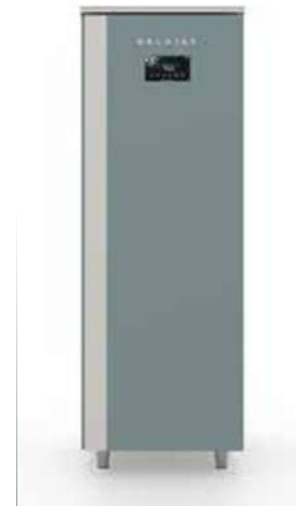
Gold



Cherry



Pistachio



Cloud

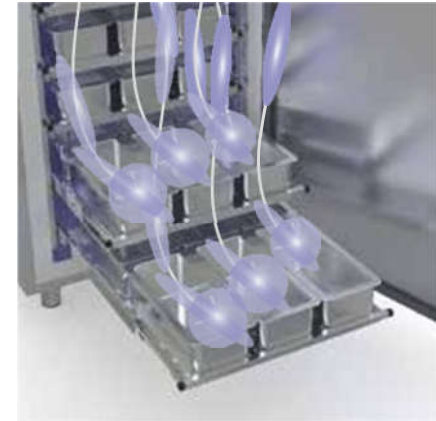
## DEFROSTING WITH SMART HOT GAS TECHNOLOGY

This innovation ensures swift and effective defrosting, minimizing the time the ice cream is exposed to temperatures that could compromise its quality. It manages the gas circulation, dynamically adjusting the heat for defrosting, protecting the ice cream's quality while reducing energy consumption. The result is a significant improvement in efficiency and a decrease in operating costs.

We guarantee that defrosting will become seamlessly integrated into the preservation process with superior preservation of your ice cream without any compromise in quality.

## HEAVY DUTY TELESCOPIC GUIDES

GELATEC embraces cutting-edge technology in the design of LabPro chamber refrigerators by integrating heavy-duty telescopic guides. Engineered for unparalleled strength and reliability, these guides allow smooth and stable drawer movement, even under heavy loads, ensuring effortless access and safe use.



## DECOMPRESSION VALVE

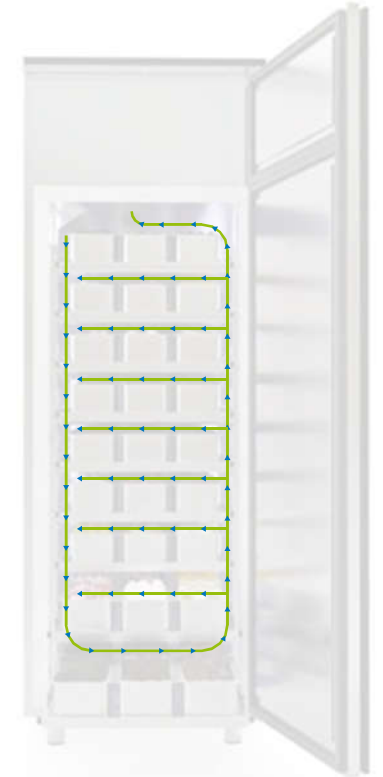
This feature is meticulously engineered to ease door opening while preventing the vacuum effect that may occur due to pressure differentials between the chamber and the exterior of the refrigerator.

This decompression valve is essential for trouble-free operation in a high-use environment, as it guarantees that the door can be opened easily every time, without effort. This improves ergonomics and increases efficiency, while at the same time reducing the risk of damage from repeated use.



## TEMPERATURE UNIFORMITY IN EVERY LAYER

Innovative engineering and advanced cooling technology guarantee that every level, from the highest to the lowest, remains at the ideal temperature for perfect ice cream preservation. Ensuring temperature uniformity is crucial for maintaining the consistency and quality of the ice cream, avoiding temperature fluctuations that can result in undesirable recrystallization or melting.





## LED LIGHTING

Elevate your ice cream presentation experience with the powerful LED lighting provided by LabPro chamber refrigerators.

This industry-leading LED lighting not only enhances the appearance of your products but also contributes to the energy efficiency of the unit.

## TOP INSULATION WITH ECOLOGICAL POLYURETHANE

At the core of LabPro's efficiency and sustainability lies the groundbreaking 42kg/m eco-friendly polyurethane insulation with its exceptional properties in maintaining temperature preservation and its unparalleled durability over time, while respecting the environment.

It ensures remarkable energy efficiency, minimum energy losses and also that the interior of the refrigerator remains at the optimal temperature to preserve the ice cream.

85mm





Thessaloniki

Industrial Area, Block 48B, P.BOX: 1005 PC.

57022 Sindos, Greece

Tel / Fax: +0030 2310 797707

Email: [info@gelatec.it](mailto:info@gelatec.it)

[www.gelatec.gr](http://www.gelatec.gr)